



Voices of Women

UU Women's Connection Newsletter

Spring Conference Brochure In-side

SPRING 2009



Meet the Chair, Diana Deweese. Diana pictured here with Illinois Wesleyan University (Bloomington) freshman daughter, Marissa at 2008 Lake Geneva Fall Retreat. Diana comes to the Connection Chair as former councilor-at-large and past treasurer. She has served on numerous retreat planning committees for the district UUWF, Women's Connection and Women's Spirit since 2001 and has been active in women's issues through other leadership positions in Springfield area—board president of Planned Parenthood and Junior League of Springfield; she has also served as president of the Abraham Lincoln UU Congregation.

Recently retired as an Assistant Deputy Director of the Illinois Department of Commerce and Economic Opportunity, Diana pursues interests such as drumming and Native American flute, drumming, sewing and other handcrafts. She is wife to Kurt DeWeese and mother to son, Kyle, who is a recent graduate of Southern Illinois University.

NEW: Retreat Payment Plan Begins this Spring

With the spring conference and this issue of VOW UU Women's Connection council is happy to announce a retreat payment plan for those who choose to use it. With the costs at retreat centers steadily increasing and the limited availability of some lower cost rooms, we will accept two payments for the spring conference as reflected in the Spring Conference registration form in this issue. First payment is due with your registration by May 18th. The final payment can be made at retreat check-in on June 5th. You will be notified of your balance with your confirmation.

To decrease the costs of planning the retreat at the organizational level, we include the retreat flyer within this VOW. Find it on page five along with registration form on pages three and four. We are so lucky in these difficult economic times to be able to continue to budget yearly for scholarships and grants. Details for first-time attendance grants, childcare grants and needs-based scholarships may be found on the second page of the registration form.

Thank you for your donations to the scholarship fund, which will surely help a sister attend this retreat or a later one, so be generous when you can. Thank you also for renewing your membership, as dues allows us to continue our work and mission to serve the women of the Central Midwest District. Also find a line on the registration form for a Micah's Porch contribution--a love offering to this on-line church--meeting in the Wicker Park area of Chicago, which seeks to serve the un-churched. We welcome its innovative pastor, David Owen-O'Quill, on Saturday morning as our keynote speaker.

CORRECTION...The **Lake Geneva Fall Retreat will be November 6, 7 and 8, 2009.** (NOT November 13-15 as advertised in the last VOW.) Planning by the Oak Park Illinois Unity Temple UU Congregation proceeds. Just announced by the planning committee is the fall theme:

"It is what it is...Healing in Hard Times." Check our website for updates as planning proceeds.

www.uuwomensconnection.org

2009 UU Women's Connection Council

Janice Bailey
Chicago, IL 312-842-0182
jjbsilverandmore@yahoo.com

Diana DeWeese, Chair
Springfield, IL 217-546-5834
KiDi71@aol.com

Jennifer Evans
Oak Park, IL 708-386-1840
Jenniferevans1@comcast.net

Pat Goller, Vice Chair
Springfield, IL 217-787-0687
patrandy@sbcglobal.net

Tori Kilhoffer
Danvers, IL 309-963-6090
t_spangle@hotmail.com

Kathy Kline, Recorder
Decatur, IL 217-428-1807
kkline923@aol.com

Nichole Lisk, Treasurer
St Louis, MO, 314-569-7103
sylvynn@hotmail.com

UUWF Awards Grant

Your dues and membership support at work:

In 2008 UUWF's Margaret Fuller Grant program awarded a \$3000 grant to the **Church of the Larger Fellowship (CLF)** funding for "**Ancient Roots: The Feminine Face of Western Religions**," an online adult religious education course. Check the CLF website for further information.

Let them have Cakes

The brochure for the District Assembly "Leadership in Times of Change" at Waukesha, Wisconsin features keynote speaker, Sharon Doloz Parks. Among the interesting offerings for workshops: *Coed Cakes? Can it be done?* Explore how to offer coed Cakes for the Queen of Heaven with experienced facilitators from the district W&R Committee and UU Women's Connection. Sign up for the DA at: www.cmwd-uua.org

Tip of the Hat:

To Abraham Lincoln Congregation of Springfield, Illinois

...for their hospitality during the UU Women's Connection Council first quarter meeting. Oh, they barely knew we were there, because they were so busy with their annual Fantasy Auction Fund (and Fun) -Raiser. Councilors assisted with the spectacular silent and live auction, which raised over \$9,000. This popular event with offerings small and large, also featured salsa dancing and a local drumming group and great food from the four corners. (Councilors contributed to the amazing array of appetizers and desserts.) For more information about how to conduct a Fantasy Auction at your congregation e-mail: connections@uuwomensconnection.org

Allerton: 51st Year

UU Women's Connection 50th Anniversary was celebrated at Allerton in Monticello, Illinois last April. We appeal to those who joined us there to celebrate our 51st year by your continued support at our spring conference at Pilgrim Park. Do this through participation and/or membership renewal.

Pilgrim Park Retreat Center, near Princeton, Illinois is rustic and beautiful with comfortable accommodations, flavorful meals, pleasant staff and a lovely circular chapel surrounded by trees.

Featured speaker on Saturday morning will be: Rev. David Owen O'Quill whose thought provoking topic speaks to the times and our yearning for connection. **"Mission to the Generations: Reaching out, not selling out."** Join your sisters for a thought- provoking, yet relaxing weekend.

HEAD, HANDS & HEART
UU WOMEN'S CONNECTION Spring Conference 2009

June 5 – 7, 2009

REGISTRATION FORM (Please fill out both sides.)

NAME _____

ADDRESS _____

CITY _____ STATE _____ ZIP _____

PHONE (____) _____ Email: _____

CONGREGATION _____ FIRST TIME PARTICIPANT? y/n _____

GRANT REQUEST? _____ MEMBERSHIP RENEWAL DATE _____
(Also fill in application on other side.) (Check upper right of your mailing label.)

ROOMMATE(S) _____

ARRIVAL DAY/TIME: _____ DEPARTURE DAY/TIME: _____

REGISTRATION FEE - \$50

(for those staying overnight on campus)

SATURDAY Only Participant Fee - \$70

(includes registration, usage fee and 2 meals)

Extra Saturday Meal – Add \$7 for Breakfast

\$20 LATE FEE (if mailed after 05/18)

ROOM/BOARD

Room type requested _____

(See reverse side for types and costs to enter.)

\$10 MEMBERSHIP DUES/RENEWAL FEE

SCHOLARSHIP CONTRIBUTION

Won't you give a sister a hand?

Micah's Porch contribution.

First payment must be at least HALF of total.

Final payment is due at the conference.

Make check payable to **UU Women's Connection.**

Send form & fees to **Nicole Lisk**

1461 Meadowside Drive, St Louis, MO 63146

You'll receive a confirmation letter and map.

Questions? connections@uuwomensconnection.org

HOW MUCH SHALL I SEND?

(Room and board details on reverse side)

REGISTRATION:

full weekend \$ _____

SATURDAY ONLY: _____

EXTRA SATURDAY MEAL(S): _____

LATE FEE: _____

ROOM/BOARD: _____

MEMBERSHIP/DUES: _____

SCHOLARSHIP CONTRIBUTION: _____

Micah's Porch CONTRIBUTION: _____

TOTAL: \$ _____

FIRST PAYMENT:

(Due May 18) _____

Remaining BALANCE:

(Due June 5) _____

(Final payment due at conference.)

REGISTRATION FORM (Please fill out both sides.)

OTHER NEEDS/REQUESTS (We will try to do our best to accommodate.)

Steps are a problem _____

Mobility/stamina problems _____

Dietary concerns/restrictions _____

Vegetarian meals preferred _____

(Please list type.)

Other _____

(please list) _____

ROOM/BOARD INFORMATION

Rates listed are per person for the entire conference period, Friday evening through Sunday afternoon. Meals included are Friday dinner (6-7 p.m.) through Sunday breakfast. Check-in time is 4 p.m. Friday. Room checkout time is 10 a.m. Sunday. The minimum stay for overnight participants is 1.5 days. Contact registrar for partial stay rates. Sheets, pillow, blanket, towel and washcloths are provided.

Please indicate 1st and 2nd choice on the lines below and **enter your first choice type and cost on the front page of the registration form.** You will be contacted if adjustments are necessary.

Upper Conference Center – on the same level as the chapel – large hotel –type rooms with private baths.

Single (double bed) _____ \$135 Double (two double beds) _____ \$116

(There are a limited number of rooms in the Upper Conference Center, so send in your reservations early!)

Lower Conference Center – dorm type rooms, shared bathrooms with showers, 4 single beds per dorm room – typically to share with 3 others, linens provided,)

Dorm _____ \$95

If you are one of the 5 first-time participants you could have your \$50 registration fee reimbursed at Pilgrim Park.

SCHOLARSHIP/GRANT APPLICATION

The UU Women's Connection budget funds four grant of up to \$100 each. Additional \$40 grants are available to help with childcare expense. *Note: On-site childcare is not available, though nursing babies are welcome.* **Applications must be postmarked by May 5. These go fast!** You'll get an answer to your request within 10 days.

My need is _____

My home church/group will provide _____

An additional scholarship is allocated for ministerial students. Please list school name and degree sought. _____

2009 UU Women's Connection Spring Conference June 5-7, 2009

Head *Thought provoking ideas and conversations*

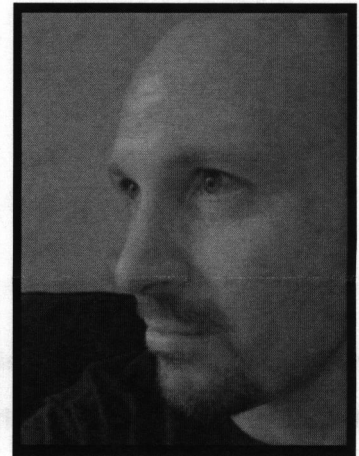
Hands *Casual "make-and-take" workshops*

& Heart *Relaxing time spent connecting with old friends
and making new friends in a nurturing setting*

Keynote: *David Owen-O'Quill*
Presents: *Mission to the Generations:
Reaching out, not selling out.*

"Mission is a vital element in the spiritual wholeness for individuals and communities. Sometimes in the more liberal communities of faith it is often misunderstood or missing all together. Yet at its core, mission is about reaching out and building the bridges that connect us with the world."

David Owen-O'Quill currently is the pastor of Micah's Porch (www.micahsporch.org) an urban Unitarian mission located in the Wicker Park neighborhood of Chicago. His wife, Jennifer, is the pastor of Second Unitarian Church of Chicago in the Lakeview neighborhood. They have a two-year old son, Daniel.



2009 Spring Retreat

- Pilgrim Park Retreat Center, Princeton, IL
- June 5-7, 2009
- **First time attendance grants** will be awarded to the first five women who register by the deadline and have not attended the spring conference before. See registration form.

Workshops

- Painting
- Sewing goddess gowns
- Card making
- Singing in Sacred Circle
- Digging in the dirt
- Keynote speaker Q&A

Activities

- Silent Auction (Bring your gently used treasures!)
- Open Mic / Coffee house
- Bonfire with drumming / singing
- Enjoying the peaceful beauty of Pilgrim Park
- Afternoon Tea and Margaret Fuller Conversation
- UU Women's Convocation Report
- Book Sale

Registration Deadline Postmark: May 18th
Questions: Diana DeWeese, Chair
kidi71@aol.com or phone: 217-546-5834

 UU Women's Connection
Pat Goller, VOW Editor
1331 W. Glenn Avenue
Springfield, IL 62704

www.uuwomomensconnection.org

RETURN SERVICE REQUESTED

INSIDE:
Spring Conference Info

Is it time to renew membership dues/support?

It is, if your mailing label shows a date earlier than June 2009.

Include recent update below and send check made to "UU Women's Connection" to Treasurer, Nicole Lisk, 1461 Meadowside Drive, St Louis, MO 63146

NEW FOR 2009: "9 for \$9 in 2009." Register units of nine or more in 2009 for only \$9 each. Individual memberships are \$10.



Membership/Mailing List Update

Have you moved? Let us know so you won't miss thing.

NAME _____

ADDRESS _____

PHONE _____ E-mail _____

CHURCH/GROUP _____

Clip and send.

UU Women's Connection 2009 Calendar

April 24-26.....CMwD Assembly

May 9-10.....2nd Quarter Mtg.
St. Joseph, Michigan

June 5-7.....Spring Conference
Pilgrim Park
Princeton, Illinois

July 18-19.....rd Quarter Mtg.
Carbondale, Illinois

November 6-8.....Lake Geneva Fall Retreat

*Your membership support makes
UU Women's Connection programs possible.*